

# Metamark Interior Architectural Films



## Choose Metamark

Metamark materials are trusted by the world's leading producers of signs and graphics. They are specified by leading brands' managers, and are insisted on when looking for quality and value.

## Technical Leadership

Our class leading manufacturing, selection and conversion control processes guarantee the highest standard of quality, technical compatibility and consistency. Metamark's technical leadership is delivered as standard with every product we sell.

## Customer Satisfaction and Value

We build relationships and we're prepared to listen, so we ensure our products and services better reflect your needs and technical requirements. We manage every element of your experience in working with us, from product performance to state of the art order processing.

## Interior Architectural Films

Surface Coverings for Design and Décor



For the latest pricing, application guides and technical support, [www.metamark.co.uk](http://www.metamark.co.uk)

For all sales enquiries or to request a sample, contact us at: [sales@metamark.co.uk](mailto:sales@metamark.co.uk) International: +44 (0) 1524 387132

Metamark (UK) Limited  
Metamark House, Genesis Business Park, Woking, GU21 5RW, UK  
Luneside, New Quay Road, Lancaster, LA1 5QP, UK

The above data is given in good faith to provide an indication of the performance of the product. Purchasers should consider the suitability of each product for its intended use and the purchaser assumes all risks in connection with such use. Seller shall not be liable for damages in excess of the purchase price of the product nor for incidental nor consequential loss.

E&EO. All information stated within this catalogue is correct at time of printing. Products may be subject to change in specification and availability.

Images in this brochure are for illustrative purposes only.

Version 1 - 10/23

Performance you can trust

Architectural Films



Natural Wood

1

Stone Finishes

2

Metal Effects

3

Soft Matt

4



Metamark Interior Architectural Films

### Creating Spaces

Interior architecture influences how spaces are experienced and how spaces function in equal measure. A space that's experienced as comfortable, attractive and accommodating is instantly desirable and that makes all the difference in both domestic and commercial situations.

Colours, textures and functional finishes set the scene and give interiors life and purpose; whether counterpointing or lending emphasis to surrounding architecture or establishing entirely new trends.

### Sustainable

Metamark Interior Architectural Films deliver breathtaking transformations extending the useful life of doors, furniture and many other interior surfaces within domestic and commercial buildings.

The cost and disruption involved when replacing interior infrastructure vanishes when Metamark films are used to transform the interior aesthetic and give established spaces new life and purpose. It's better for the planet, too.

### Practical

Metamark Interior Architectural Films are as practical as they are durable and attractive. They offer a range of textures, colours and finishes that support inspiring interior transformations and they're hard-wearing, repairable, and easy to maintain and clean.

Our films can be installed on a wide range of interior surfaces and the process is fast, clean, quiet and odour-free. The visual transformation is immediate and dramatic. It lasts, too.

### Supported

Metamark Interior Architectural Films can be installed by professionals used to handling pressure-sensitive self-adhesive materials. The process is dry and clean and Metamark offers technical support and specialist application tools.

Once installed, our films can be trusted to perform and will stay looking good for many years. The possibilities are easy to imagine and easier still to deliver.





**UKCA and European CE Rated**  
Metamark Architectural Films are certified to UKCA and European CE regulations. Fire Rated to EN 13501-1 B-S2, D0.

**Dual Layer Films**  
Metamark Architectural Films are engineered from a durable base layer plus a clear protective top layer.



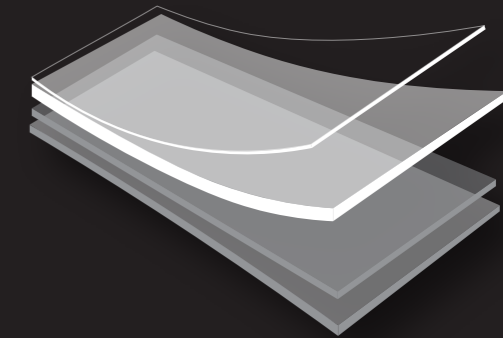
**Textured Finishes**  
Metamark Architectural Films offer an authentic finish with highly realistic textures.



**Durable Films**  
Metamark Architectural Films offer excellent durability against daily wear and tear.

## Specification

- UKCA and Euro CE approved
- Fire rated to EN 13501-1 B-S2, D0
- EN 15102:2007 + A1:2011
- REACH Compliant
- Roll width 1.22m
- Durability up to 10 years Interior



- Protective top layer with textured or smooth finish.
- Total thickness 270 micron, dual layer film construction.
- MetaScape® air release adhesive system for ease of application.



### Range Selection

Metamark MiA™ Interior Architectural films offer a range of finishes for interior transformations. The range includes finishes with authentic textures and tones. The materials are hardwearing, repairable, and easy to maintain and clean.



### MetaScape® Adhesive

The MetaScape® adhesive system offers ease of application by providing air with an exit route from under the graphic. It makes for faster, trouble free application of larger graphics. Suitable for dry application method.



### UKCA and Euro CE Approved

Assessed and approved to meet UK regulatory requirements and conformity with EU health, safety, and environmental protection standards.



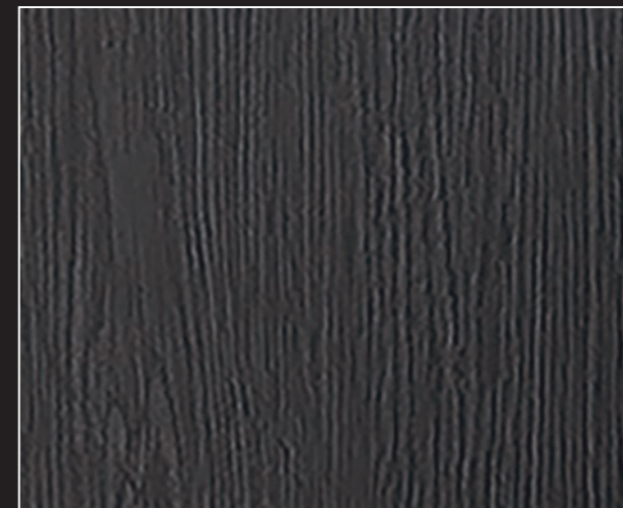
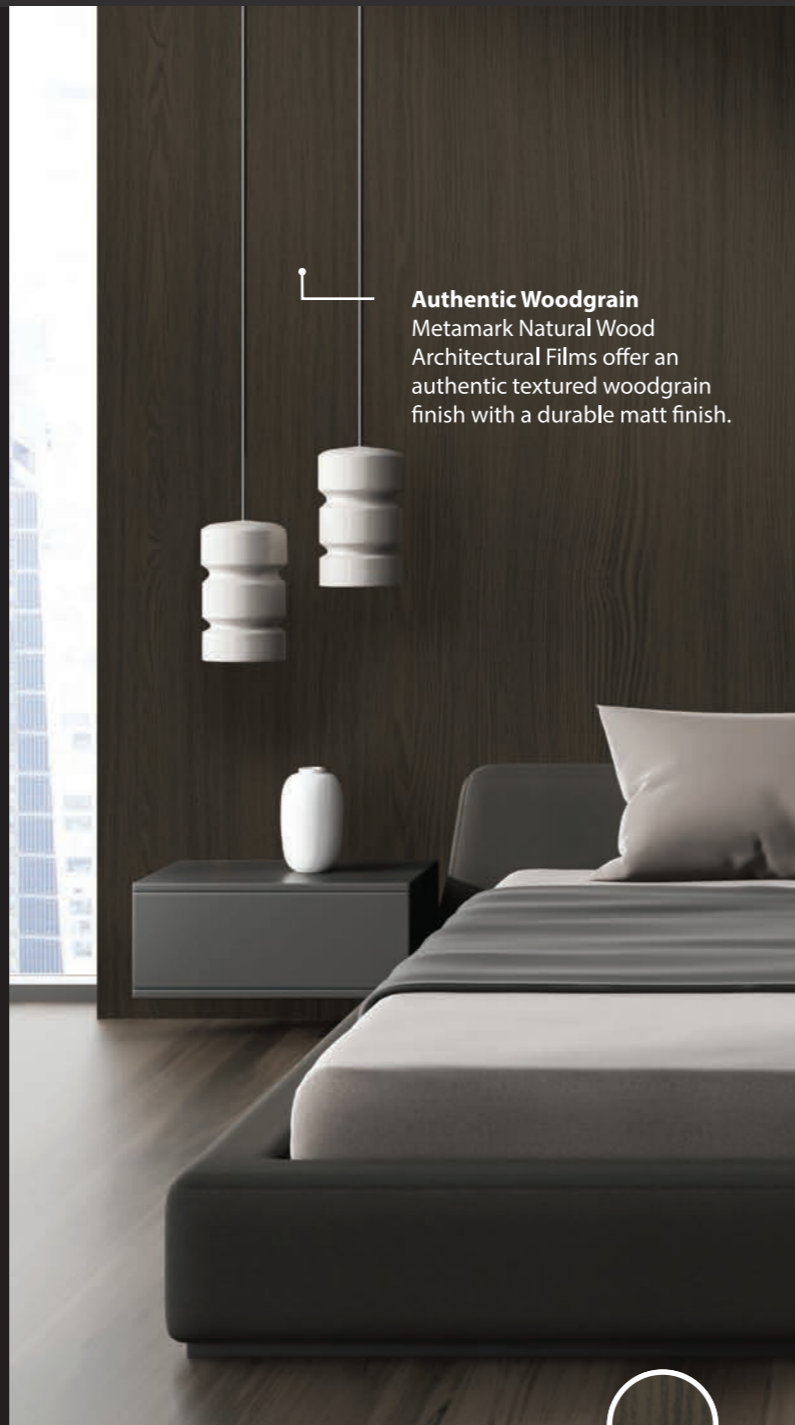
### MetaSure Warranty

Metamark is one of the leading global manufacturers of adhesive-coated film technologies giving total reassurance. Our MetaSure warranty program ensures product compliance with specification.

1 Natural Wood

These premium wood finishes simulate the effect and appearance of real wood, to capture the grain and natural beauty. Woods go in and out of fashion and can dominate the feel of a space. So we created a limited range of contemporary wood effect finishes for architectural surfaces, specified around European trends.

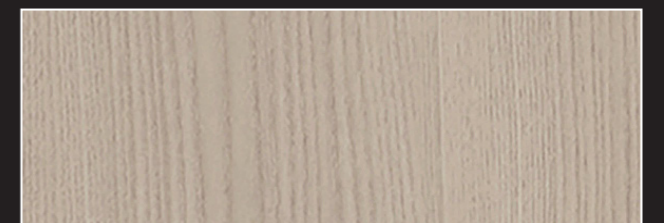
**Authentic Woodgrain**  
Metamark Natural Wood Architectural Films offer an authentic textured woodgrain finish with a durable matt finish.



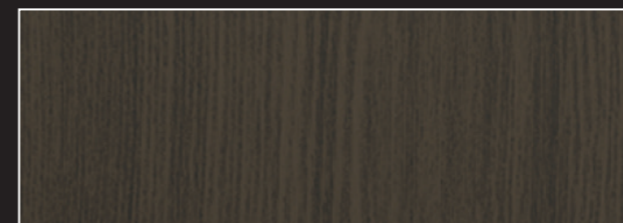
Black Oak | M-AF-W05



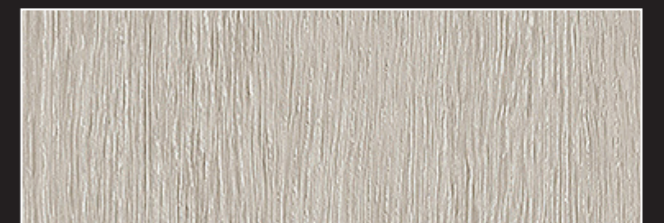
Grey Oak | M-AF-W02



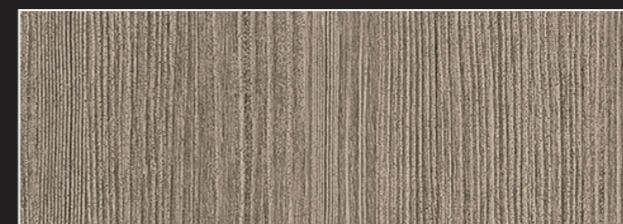
Light Oak | M-AF-W07



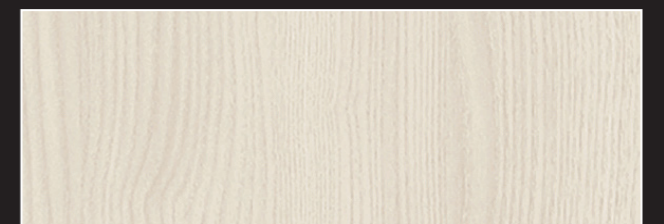
Dark Ash | M-AF-W08



Washed Ash | M-AF-W03



Drift Oak | M-AF-W04



White Oak | M-AF-W01



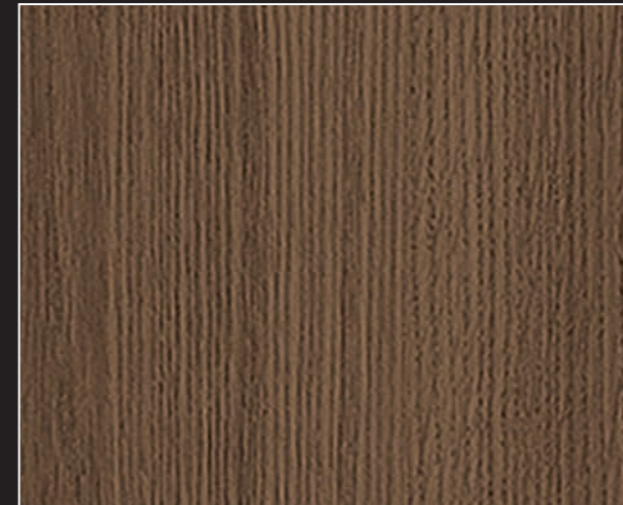
Black Oak | M-AF-W05



Dark Ash | M-AF-W08



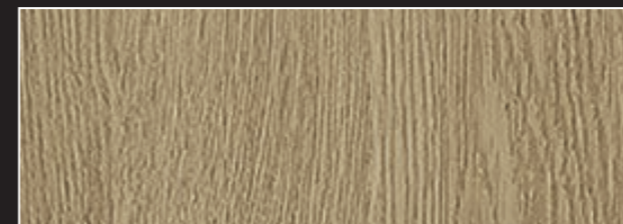
Natural Oak | M-AF-W09



Chocolate Oak | M-AF-W11



Prime Oak | M-AF-W10



Natural Oak | M-AF-W09



Chocolate Oak | M-AF-W11



## 2 Stone Finishes

With its imperfect beauty, stone has always had a place in architectural finishes. There is a trend to the once controversial urban feel of concrete, and to more understated natural stones. These finishes have found their place in the palette of architectural finishes, and these films are ideal for domestic worktops, walls and coverings.



**Durable Finish**  
Metamark Stone Finish Architectural Films offer a durable matt finish.

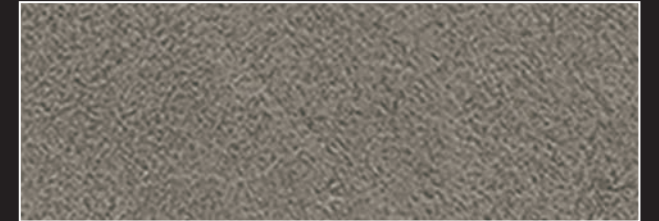
Urban Stone | M-AF-S07



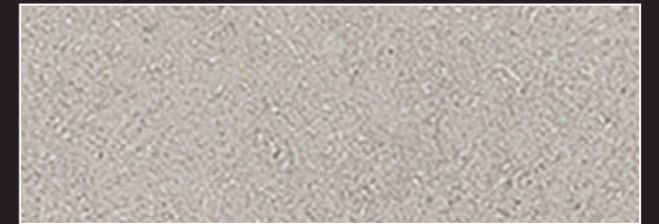
## Stone Finishes



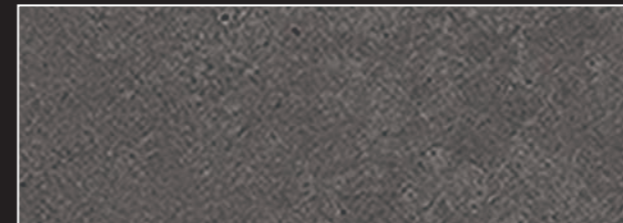
Concrete | M-AF-S06



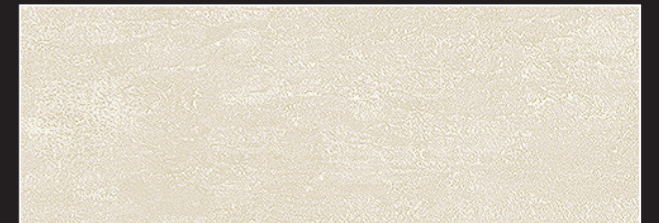
Celtic Stone | M-AF-S04



White Stone | M-AF-S03



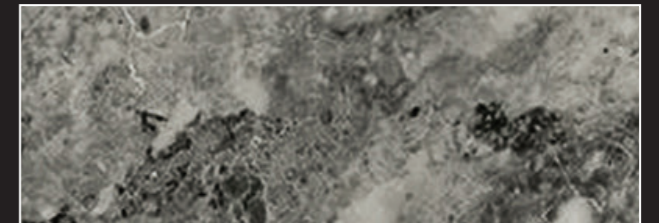
Urban Stone | M-AF-S07



Limestone | M-AF-S08



Welsh Slate | M-AF-S05



Onyx Marble | M-AF-S09

When using on worktops please refer to care instructions, see [metamark.co.uk](http://metamark.co.uk)

### 3 Metal Effects

Metal finishes can provide a striking contrast to more conventional interior finishes. Metal finishes can have a contemporary, or urban feel. They can have a clean functional feel. And they can feel uber premium. The Metamark exclusive range of finishes will help to enhance any space.



**Metallised Effect**  
Metamark Metal Effect Architectural Films provide a modern high tech feel with a durable matt finish.

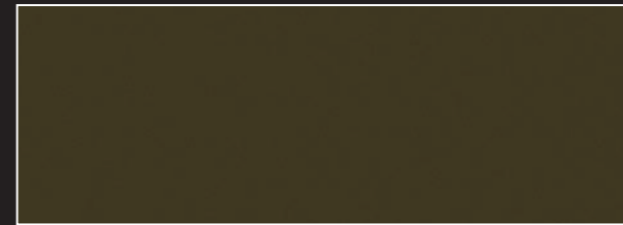
Riven Ore | M-AF-L01



Riven Ore | M-AF-L01



Bright Steel | M-AF-L02



Dark Bronze | M-AF-L03



# 4 Soft Matt

Colours can make a real difference to the ambiance of a space. The finish has a big impact on their feel and how light reflects. Metamark soft matt finishes are a designer led colour palette created to enhance interior spaces, with a premium matt finish that is soft to the touch.

**Premium Finish**  
Metamark Soft Matt Architectural Films provide a premium soft touch matt finish.

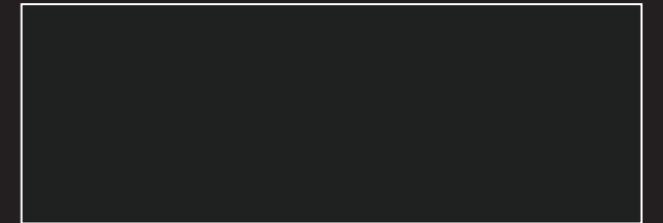


Oxford Matt | M-AF-M06

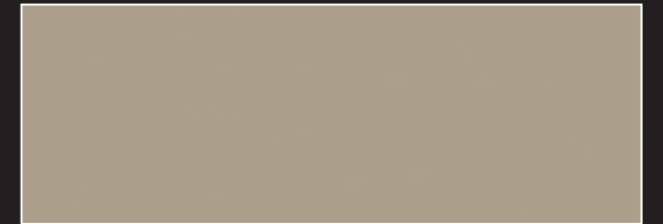
Pebble Matt | M-AF-M04



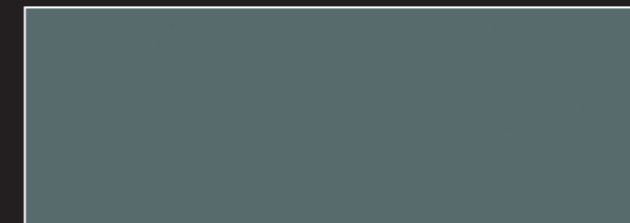
Oxford Matt | M-AF-M06



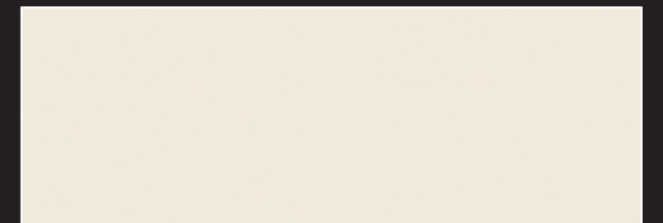
Black Matt | M-AF-M10



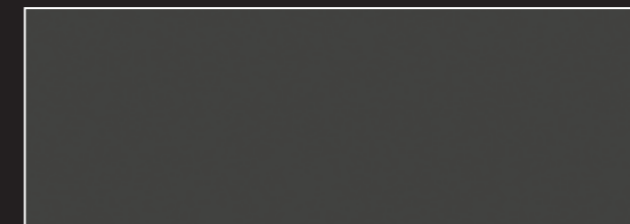
Putty Matt | M-AF-M03



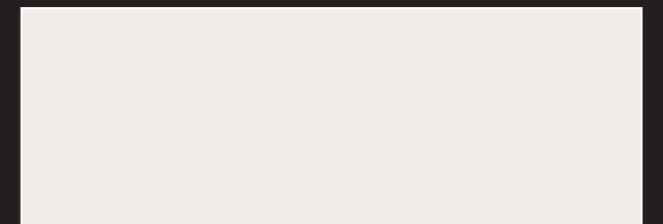
Norsk Matt | M-AF-M05



Clay Matt | M-AF-M02



Pebble Matt | M-AF-M04



Cotton Matt | M-AF-M01